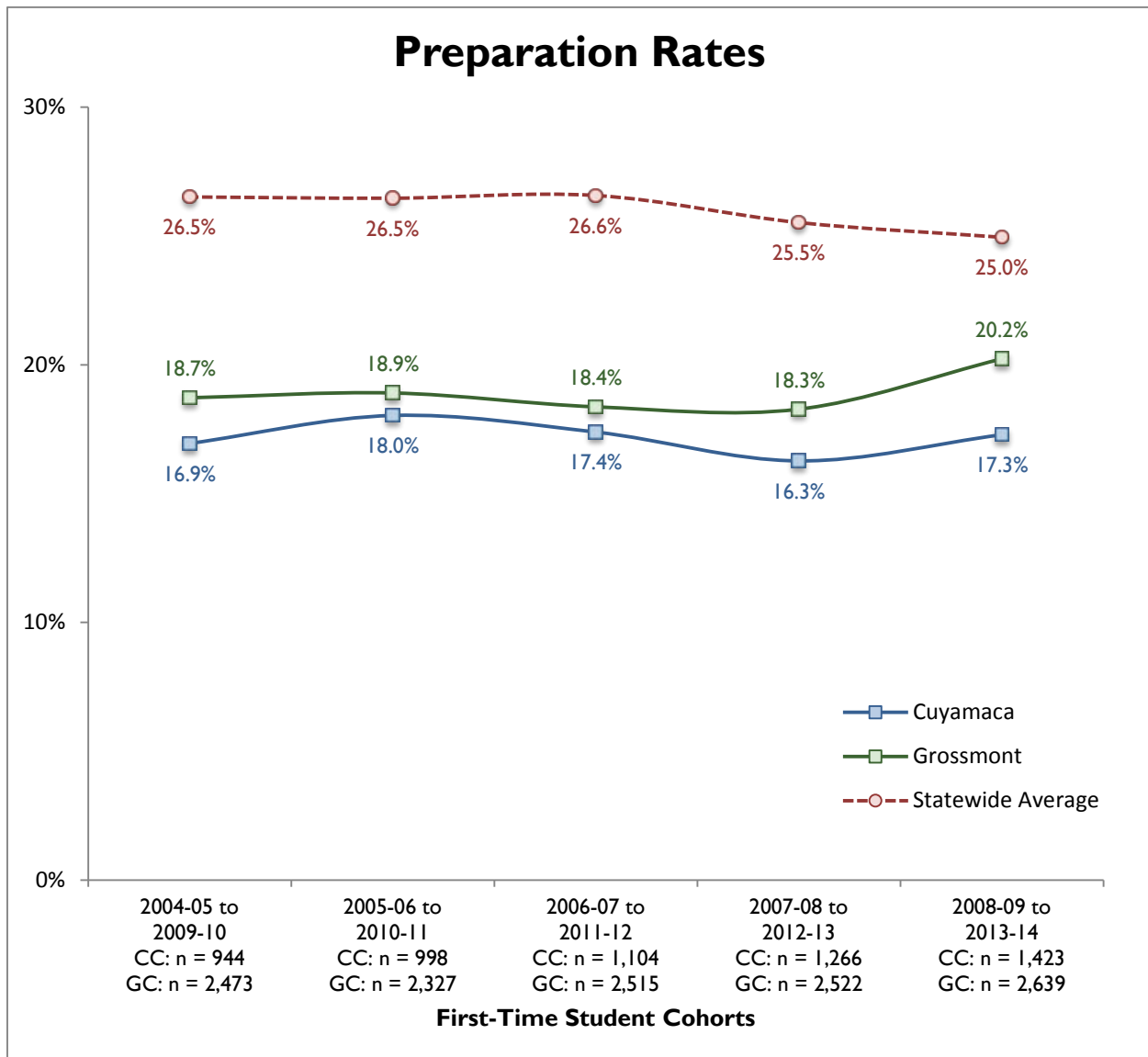


Preparation Rates (Student Success Scorecard)

The preparation rate data are derived from the completion cohorts in the Student Success Scorecard. The completion cohorts comprise of first time students in the system that earned at least six units (within six years of their first enrollments) and attempted any level of math or English within three years. . If a student’s first attempted English class was below transfer-level English (ENGL-120) **or** first attempted math course was below college-level math (MATH-103/110), then the student was considered “unprepared.” Students must have attempted transfer-level English **and** college-level math or higher to be considered “prepared.”

Figure 1: Preparation Rate Five-Year Trends

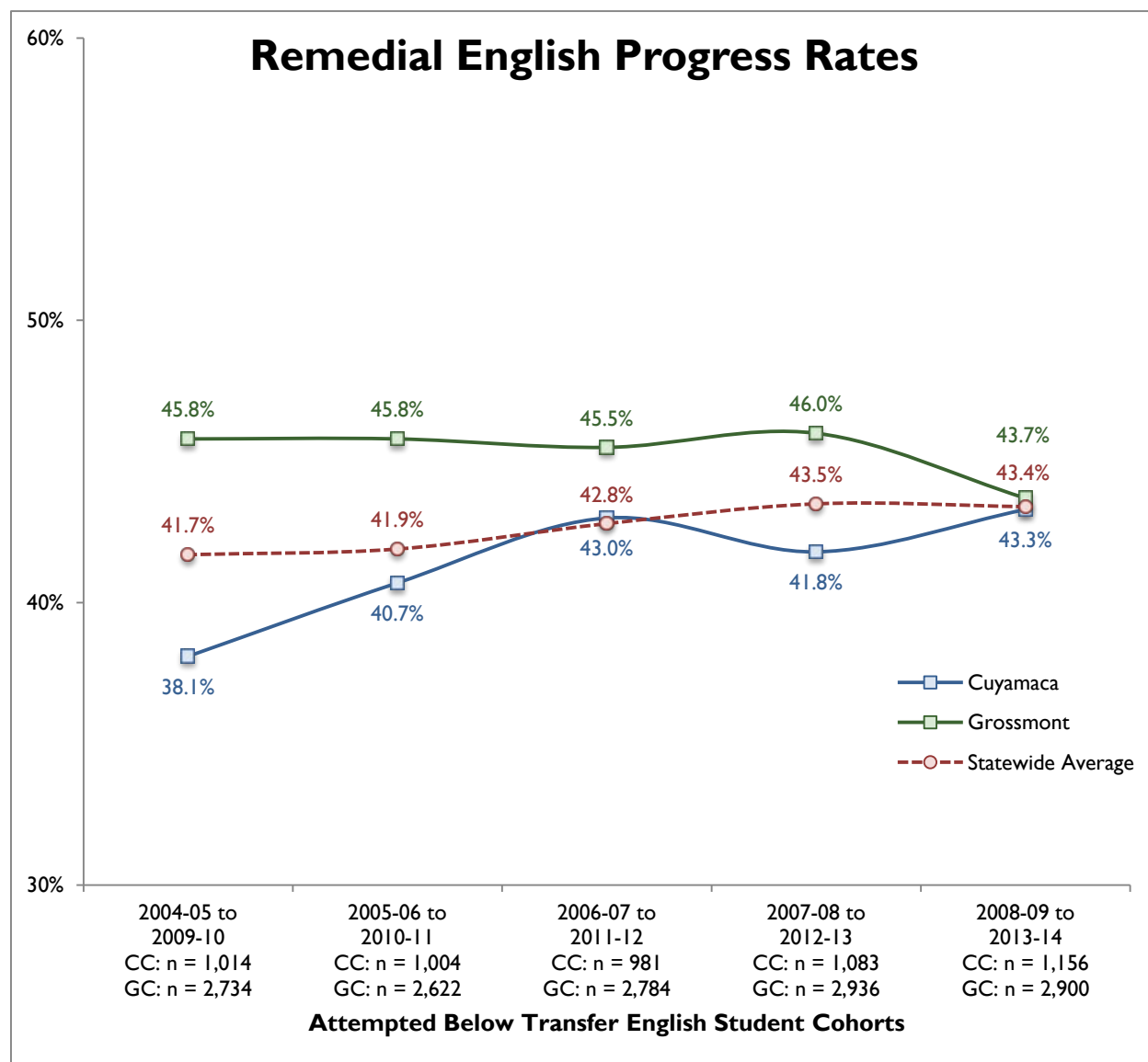


Remedial Progress Rates (Student Success Scorecard)

Remedial English Progress Rates

The initial cohort of students is comprised of those first-time students whose first attempt in an English course was below transfer-level (ENGL-120). The cohort year is based on the academic year of the first attempt. Students with successful outcomes are those students who successfully completed transfer-level English (ENGL-120) within six years of their first attempt.

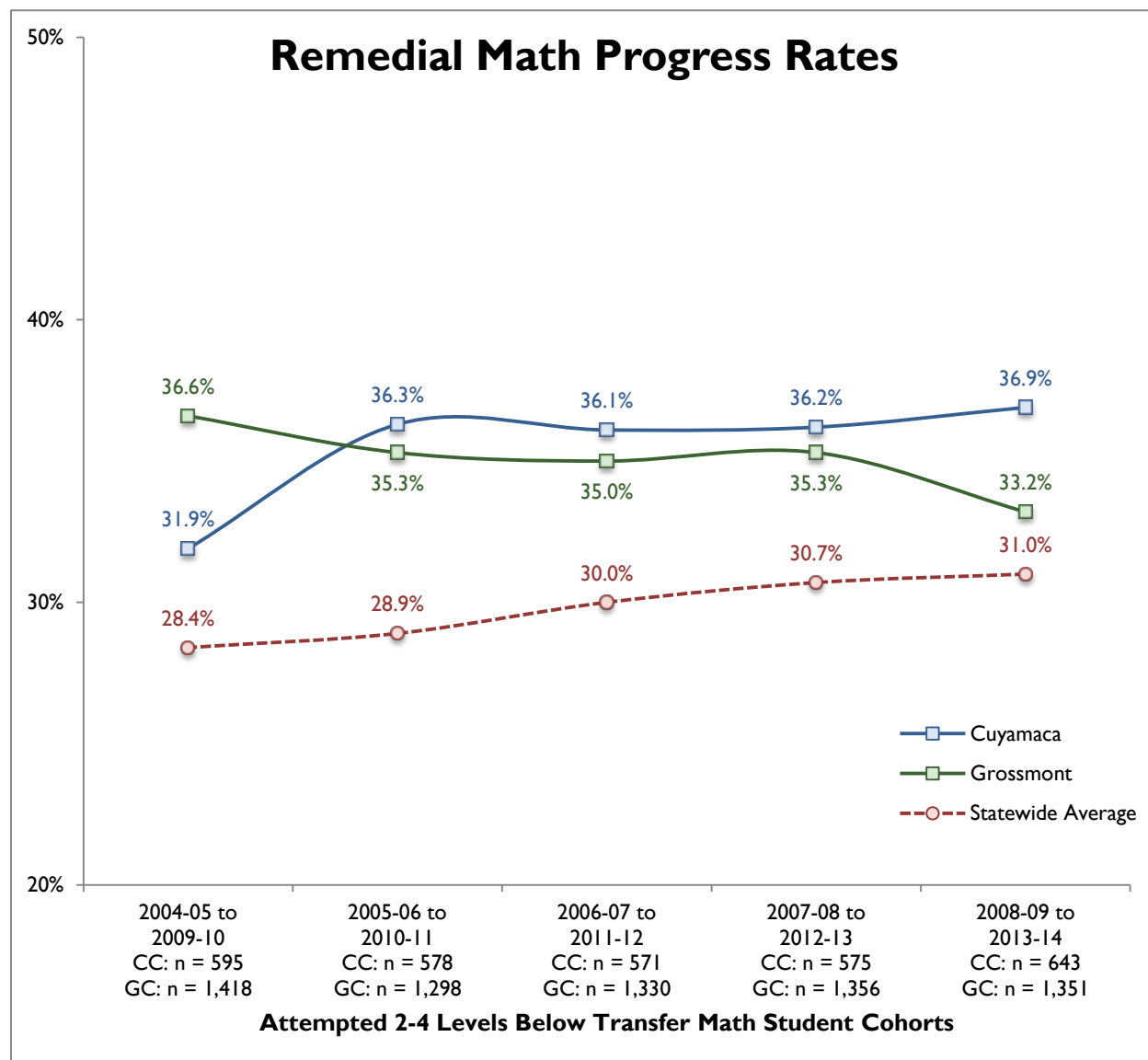
Figure 2: Remedial English Progress Rate Five-Year Trends



Remedial Math Progress Rates

The initial cohort of students is comprised of those first-time students whose first attempt in a math course was below college-level (MATH-103/110). The cohort year is based on the academic year of the first attempt. Students with successful outcomes are those students who successfully completed college-level math (MATH-103/110) within six years of their first attempt.

Figure 3: Remedial Math Progress Rate Five-Year Trends



Completion Rates (Student Success Scorecard)

The Completion Rate data are derived from the completion cohorts in the Student Success Scorecard. The completion cohorts comprise of first time students in the system that earned at least six units (within six years of their first enrollments) and attempted any level of math or English within three years. Successful completion includes students who earned a degree or certificate OR transferred to a 4-year institution OR were transfer-prepared within six years of their first enrollment. Students are transfer-prepared if they successfully completed 60+ UC/CSU transferrable units with a GPA greater than or equal to 2.0.

Figure 4: Completion Rate Five-Year Trends

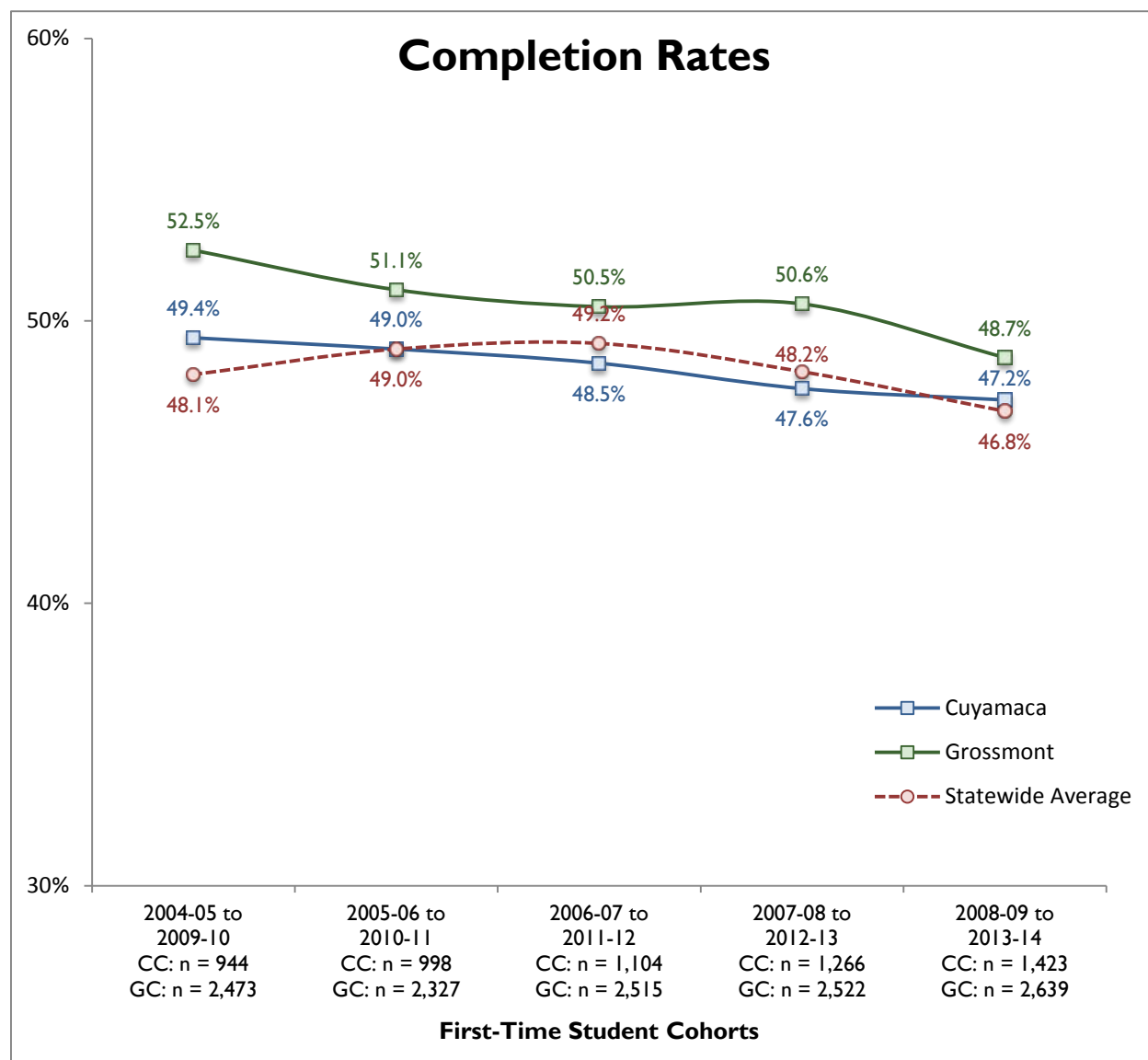


Figure 5: Completion Rate Five-Year Trends by Preparation

